



# Crossfading in Texas

Cody Stewart, EMPSA

Christine Adams, MBA

Center for Alcohol and Drug Education Studies,

Texas A&M Transportation Institute



# THE BASICS

Weed is legal.  
(kind of)



# Cannabis Explained

## Compounds (phytocannabinoids)

- Tetrahydrocannabinol (THC)
- Cannabidiol (CBD)
- Cannabinol (CBN)
- Subspecies - Indica & Sativa

## Marijuana:

- Adult-Use
- Medicinal

## Hemp:

- Animal Feed
- Fuel / Paint
- Fabric / Cordage
- Building materials





# Hemp

**HEMP IS THE STRONGEST  
NATURAL FIBRE IN THE WORLD.**  
IT'S KNOWN TO HAVE OVER 50,000 DIFFERENT USES

## THE COBRA EFFECT

A WELL-INTENTIONED MEASURE CAN OFTEN BACKFIRE  
AND HAVE THE OPPOSITE EFFECT TO INTENDED



**INTENTION**  
REDUCE COBRA  
POPULATION



**ACTION**  
A BOUNTY FOR  
DEAD COBRAS!



**EFFECT**  
PEOPLE START  
COBRA FARMING

sketchplanations

### TEXTILES

- Clothing
- Diapers
- Handbags
- Denim
- Shoes
- Fine Fabrics

### INDUSTRIAL TEXTILES

- Rope
- Canvas
- Tarps
- Carpeting
- Netting
- Caulking
- Moulded Parts

### PAPER

- Printing
- Newsprint
- Cardboard
- Packaging

### FOODS

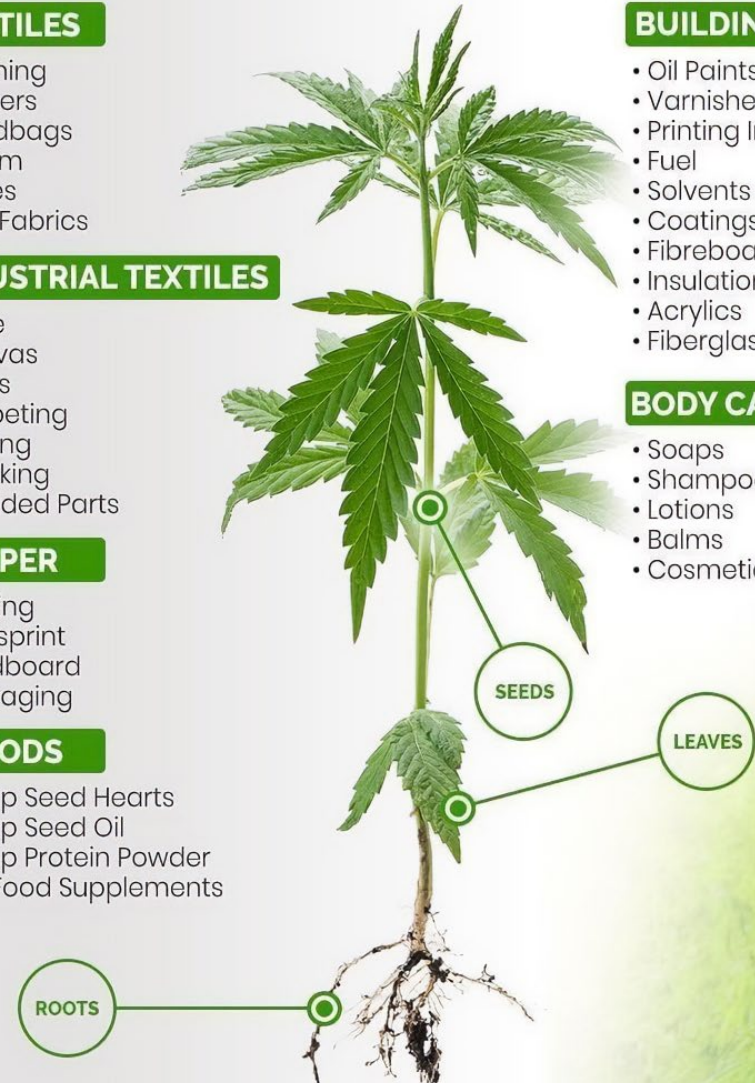
- Hemp Seed Hearts
- Hemp Seed Oil
- Hemp Protein Powder
- EFA Food Supplements

### BUILDING MATERIALS

- Oil Paints
- Varnishes
- Printing Inks
- Fuel
- Solvents
- Coatings
- Fibreboard
- Insulation
- Acrylics
- Fiberglass Substitute

### BODY CARE

- Soaps
- Shampoos
- Lotions
- Balms
- Cosmetics





# Hemp - *Intention*

1

Remove from Schedule I  
of the Controlled  
Substances Act

2

Treat hemp akin to other  
agricultural  
commodities (mostly)

**HEMP IS THE STRONGEST  
NATURAL FIBRE IN THE WORLD.**  
IT'S KNOWN TO HAVE OVER 50,000 DIFFERENT USES

## TEXTILES

- Clothing
- Diapers
- Handbags
- Denim
- Shoes
- Fine Fabrics

## INDUSTRIAL TEXTILES

- Rope
- Canvas
- Tarps
- Carpeting
- Netting
- Caulking
- Moulded Parts

## PAPER

- Printing
- Newsprint
- Cardboard
- Packaging

## FOODS

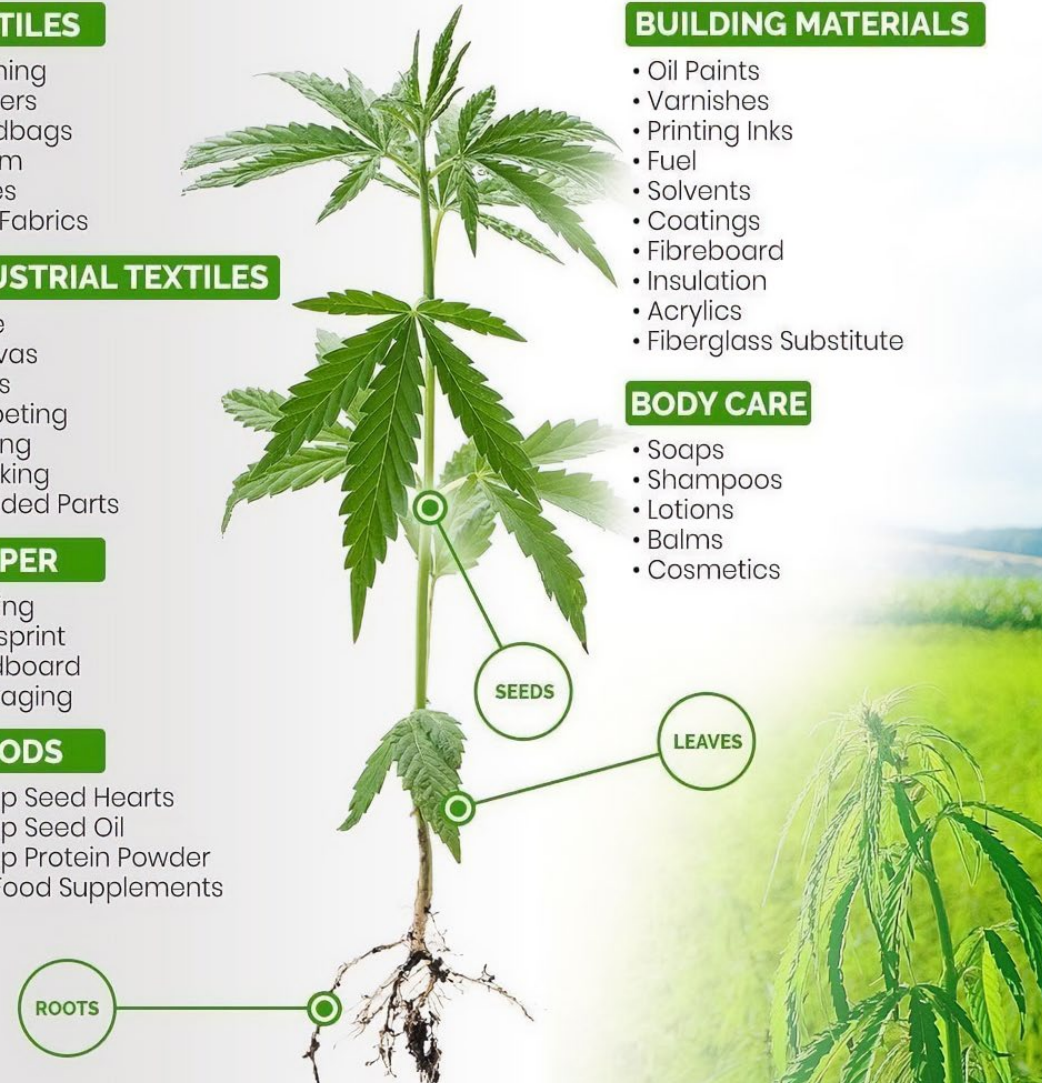
- Hemp Seed Hearts
- Hemp Seed Oil
- Hemp Protein Powder
- EFA Food Supplements

## BUILDING MATERIALS

- Oil Paints
- Varnishes
- Printing Inks
- Fuel
- Solvents
- Coatings
- Fibreboard
- Insulation
- Acrylics
- Fiberglass Substitute

## BODY CARE

- Soaps
- Shampoos
- Lotions
- Balms
- Cosmetics





# Hemp - *Action*

## The Agriculture Improvement Act of 2018 (Farm Bill)

Defined hemp as "any cannabis plant, or derivative thereof, that contains not more than **0.3 %  $\Delta$ -9 THC** on a dry weight basis"





# Hemp - Effect

Well, you said  $\Delta$ -9-THC...but you didn't say...

- $\Delta$ -6a10a-THC
- $\Delta$ -6-THC
- **$\Delta$ -8-THC**
- FX-  $\Delta$ -8
- **$\Delta$ -10-THC**
- $\Delta$ -11-THC
- PHC
- **THC-A**
- THC-B
- THC-C8
- THC-H
- 8-Hydroxy-HHC
- 10-Hydroxy-HHC
- 11-Hydroxy-HHC
- **HHC**
- HHCA
- H4CBD
- THC-JD
- THC-M
- THC-O
- **THC-P**
- THC-V
- THC-X





---

# Hemp Derived Psychoactive Cannabis Products

- Other cannabinoids *are* naturally occurring in the hemp plant, but not in quantities economical for extraction.
- To produce these derived psychoactive cannabis products, CBD is extracted and synthesized in a laboratory to create tetrahydrocannabinols (THC).

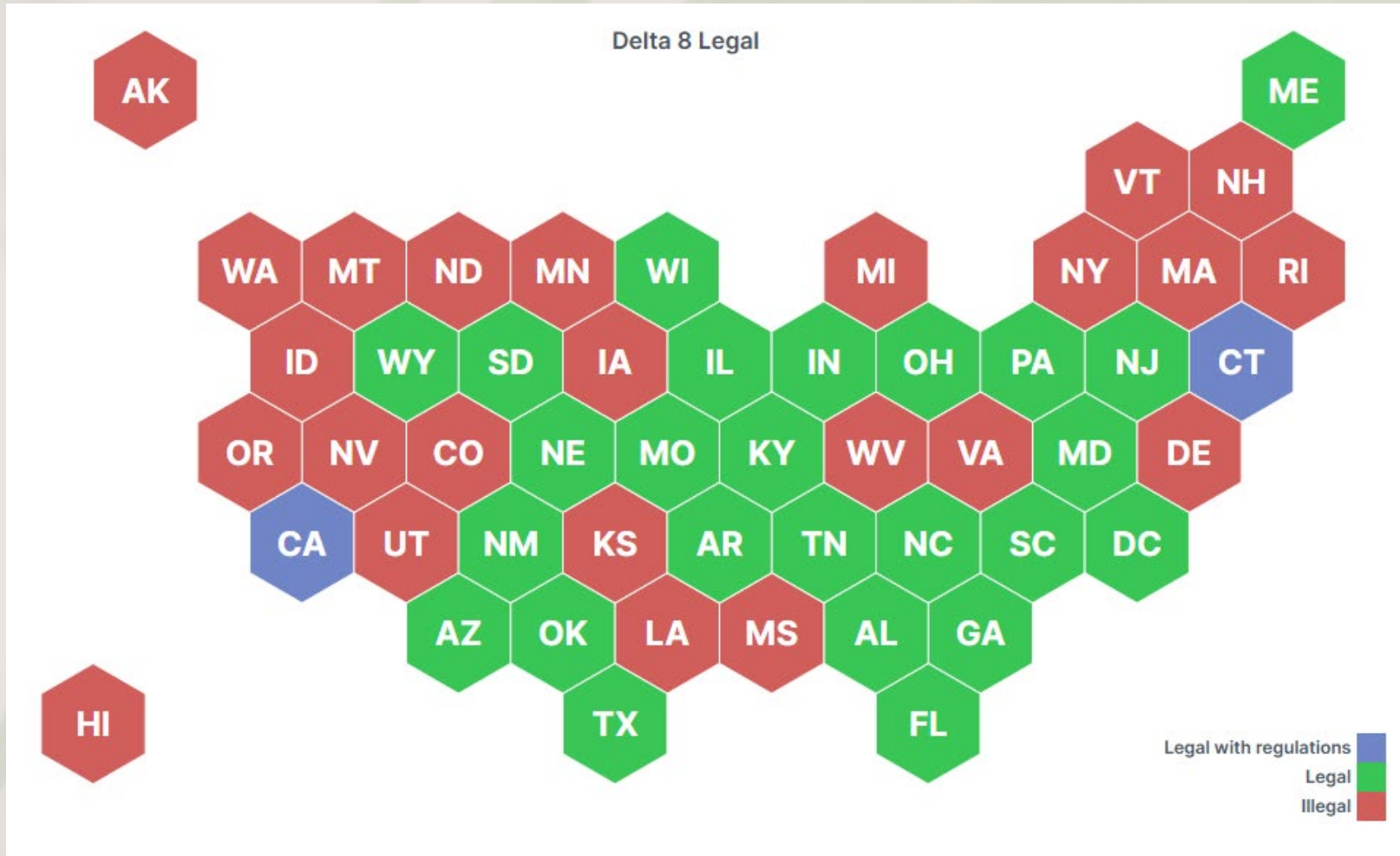


A central white box with a black border contains the text "DELTA-8 THC HAS SERIOUS HEALTH RISKS" in red, bold, uppercase letters. Surrounding the box are various items: a pill bottle with orange capsules, a bowl of cereal with milk splashes, a black vape pen, a stack of brownies, several colorful gummy candies, two pieces of chocolate, a row of colorful round candies, and a pile of dried cannabis flowers.

**DELTA-8 THC  
HAS SERIOUS  
HEALTH RISKS**



# State Level Prevention



**24 states have Outlawed Delta 8 Products,**  
21 have legal cannabis markets:

- Alaska - Adult Use
- Colorado - Adult Use
- Delaware - Adult Use
- Iowa - Low Dose THC
- Louisiana - Medical
- Massachusetts - Adult Use
- Minnesota - Adult Use
- Michigan - Adult Use
- Mississippi - Medical
- Montana - Adult Use
- Nevada - Adult Use
- New York - Adult Use
- New Hampshire - Medical
- North Dakota - Medical
- Oregon - Adult Use
- Rhode Island - Adult Use
- Utah - Medical
- Vermont - Adult Use
- Virginia - Adult Use
- Washington - Adult Use
- West Virginia - Medical

# Cannabis Products Currently Available in Legalized States







# Cannabis Products Currently Available in Legalized States

**TEXAS**







SMOKEN JOE'S

WELCOME TO  
GAELAND  
ATM

OPEN

RAW

OPEN

RAUGHT

SMOKEN JOE'S  
WE'RE OPENING  
BUSINESSES  
EVERYWHERE







<u>Analysis Type</u>	<u>SOP</u>	<u>Date Tested</u>	<u>Status</u>
Cannabinoids	EA-SOP-POTENCY	10/29/2022	Complete
Heavy Metals	EA-SOP-HM	10/31/2022	Pass
Microbials	EA-SOP-ARIA	11/01/2022	Pass
Mycotoxins	EA-SOP-MYCO	10/31/2022	Pass
Residual Solvents	EA-SOP-RES	10/31/2022	Pass
Pesticides	EA-SOP-PEST	10/31/2022	Pass



Unit Size (g): 85

<u>Analyte</u>	<u>Result (mg/g)</u>	<u>mg/unit</u>	<u>w/w %</u>	<u>LOQ (ppm)</u>	<u>LOD (ppm)</u>
CANNABIDIVARIN (CBDV)	<LOD	<LOD	<LOD	100	30
CANNABICHROMENE (CBC)	<LOD	<LOD	<LOD	100	30
CANNABIGEROL (CBG)	<LOD	<LOD	<LOD	100	30
CANNABIDIOL (CBD)	0.33	28.11	0.03	100	30
CANNABINOL (CBN)	<LOD	<LOD	<LOD	100	30
$\Delta$ 9 TETRAHYDROCANNABINOL (D9-THC)	0.27	23.35	0.03	100	30
$\Delta$ 8 TETRAHYDROCANNABINOL (D8-THC)	0.09	7.99	0.01	100	30



HOME / DELTA 9 EDIBLES / D9 CHOCOLATE | CARAMELS / Delta 9 CBD 300MG Chocolate Bar

## DELTA 9 CBD 300MG CHOCOLATE BAR

\$29.99

### TYPE OF CHOCOLATE

Milk Dark

1

ADD TO CART

OVERVIEW

PRODUCT DETAILS

### Looking for Delta 9 THC legally available without a prescription? You've come to the right place!

RESTART CBD's Delta 9:CBD chocolate bars are so delicious and smooth that you'll be eager to add them to your daily routine.

Our dark chocolate is perfect for the more experienced pallet with over 64% cocoa. It's free of all dairy products, making it a great vegan option. *Zero artificial flavors, colors, or preservatives.*

Our milk chocolate is perfect for those who prefer the sweeter, creamier side of the chocolate spectrum. *Zero artificial flavors, colors, or preservatives. This product is not vegan.*

NO prescription needed. No Pre-Qualifications. No Doctor's Appointment.



- Serving Size: 1 Piece (For 1st time users, only consume ½ piece or less per 24 hours)
- Servings per Bar: 15
- Strength per Serving: 20mg 10mg Δ9THC:10mg CBD
- Total Cannabinoids per Bar: 300mg (150mg Δ9THC:150mg CBD)
- Specially formulated fast-acting Delta 9 THC chocolate.
- Made with natural, hemp-derived Delta 9 THC. Federally legal & compliant.
- No artificial flavors or colors.
- Contains <0.3% Δ9THC.

#### HOW TO USE:

1. Start low and go slow. Break the chocolate bar along the lines and cut pieces in ½ or less for a lower dose. With more experience, you will find the best dose for your body.
2. Take with food for best results. THC binds to fat and the effects are known to be stronger with food in your system.
3. Edibles have a delayed result. Do not consume more than 2.5mg Delta 9 THC per 24 hours.

Ready to get blasted into oblivion? Grab yours and get felonious!



**Reviews:**

“I was high for 2 days.”

“Best way to escape your daily troubles.”

“3 swigs and got so messed up I couldn't stand!”

# Delta-9 Syrup – Watermelon Felon – 1000mg

★★★★★ [134 Reviews](#)

\$29.99 / each



NIBBLE



BITE



SNACK



SCARF

● In stock, ready to ship

🚚 Free shipping on orders \$75+

- Highly Potent 1000mg blend of Delta 9 & Delta 8
- Watermelon flavor so good it should be illegal
- 23 servings per bottle
- Trippier than a turtle in a top hat!
- Vegan
- Warning: May cause psychotropic effect

## Effects



CHILLAXED



ENERGETIC



EUPHORIC

**Does not ship to the following states:**

CA, CO, HI, IA, ID, MA, MI, MS, MT, ND, NV, OR, RI, UT, VA, VT, WA



## POTENCY CANNABINOID PROFILE

Total THC $\text{THCA} * 0.877 + \text{D9-THC}$ <b>329.55 mg/unit</b>	Total CBD $\text{CBDA} * 0.877 + \text{CBD}$ <b>&lt;LOQ</b>
---	---

<u>Analyte</u>	<u>Result (mg/g)</u>	<u>mg/unit</u>	<u>w/w %</u>	<u>LOQ (ppm)</u>	<u>LOD (ppm)</u>
CANNABIDIVARIN (CBDV)	<LOQ	<LOQ	<LOQ	100	30
CANNABICHRMENE (CBC)	<LOQ	<LOQ	<LOQ	100	30
CANNABIGEROL (CBG)	<LOQ	<LOQ	<LOQ	100	30
CANNABINOL (CBN)	<LOQ	<LOQ	<LOQ	100	30
CANNABIDIOL (CBD)	<LOQ	<LOQ	<LOQ	100	30
CANNABIDIOLIC ACID (CBDA)	ND	ND	ND	100	30
$\Delta$ 9-TETRAHYDROCANNABINOLIC ACID (THCA)	ND	ND	ND	100	30
$\Delta$ 9-TETRAHYDROCANNABINOL (D9-THC)	2.39	329.55	0.24	100	30
$\Delta$ 8-TETRAHYDROCANNABINOL (D8-THC)	5.36	739.41	0.54	100	30

NOTES: 1ml = 1.2g, serving size is 5ml (6g).



## THC Sodas

Dude & Shirley Mixed Pack!  
4 pack \$22.49

**Each drink is 16floz and  
contains 50mg of real  
Delta-9 THC.**



# Consumer Review – Dr. Dank Soda (50mg THC)











Tinctures

Gummies

Topicals

Petibles

ALL THCO  
50% OFF

HEAVY HITTERS  
\*\*\*

TORCH  
GUMMIES  
\$49.99

NIGHTROOM  
GUMMIES

NEED





















UTBAR  
LEMON OCEAN

**WARNING:**  
THIS PRODUCT  
CONTAINS NICOTINE.  
NICOTINE IS AN  
ADDICTIVE CHEMICAL.

**Cake**  
2.0  
**BLUEBERRY COOKIES**  
INDICA  
DELTA 8 • 2.0 GRAM  
DISPOSABLE DEVICE

**Cake**  
2.0  
**KING JAMES XIII**  
HYBRID  
DELTA 8 • 2.0 GRAM  
DISPOSABLE DEVICE  
ALL NATURAL  
NATIVE TERPENES

**Cake**  
2.0 RESIN  
**JACK SAUCE**  
SATIVA  
DELTA 8 • HXC • THC-P  
2.0 GRAM  
DISPOSABLE DEVICE  
ALL NATURAL  
NATIVE TERPENES

**Cake**  
3.0 RESIN  
**PINEAPPLE UPSIDE  
DOWN CAKE**  
INDICA  
THC-M • DELTA 8 LIQUID  
DIAMONDS • THC-A • THC-P  
3.0 GRAM DISPOSABLE DEVICE  
ALL NATURAL  
NATIVE TERPENES

**Cake**  
3.0 RESIN  
**LEMONADE**  
SATIVA  
THC-M • DELTA 8 LIQUID  
DIAMONDS • THC-A • THC-P  
3.0 GRAM DISPOSABLE DEVICE  
ALL NATURAL  
NATIVE TERPENES

**Cake**  
3.0 RESIN  
**AK-48**  
SATIVA  
THC-M • DELTA 8 LIQUID  
DIAMONDS • THC-A • THC-P  
3.0 GRAM DISPOSABLE DEVICE  
ALL NATURAL  
NATIVE TERPENES

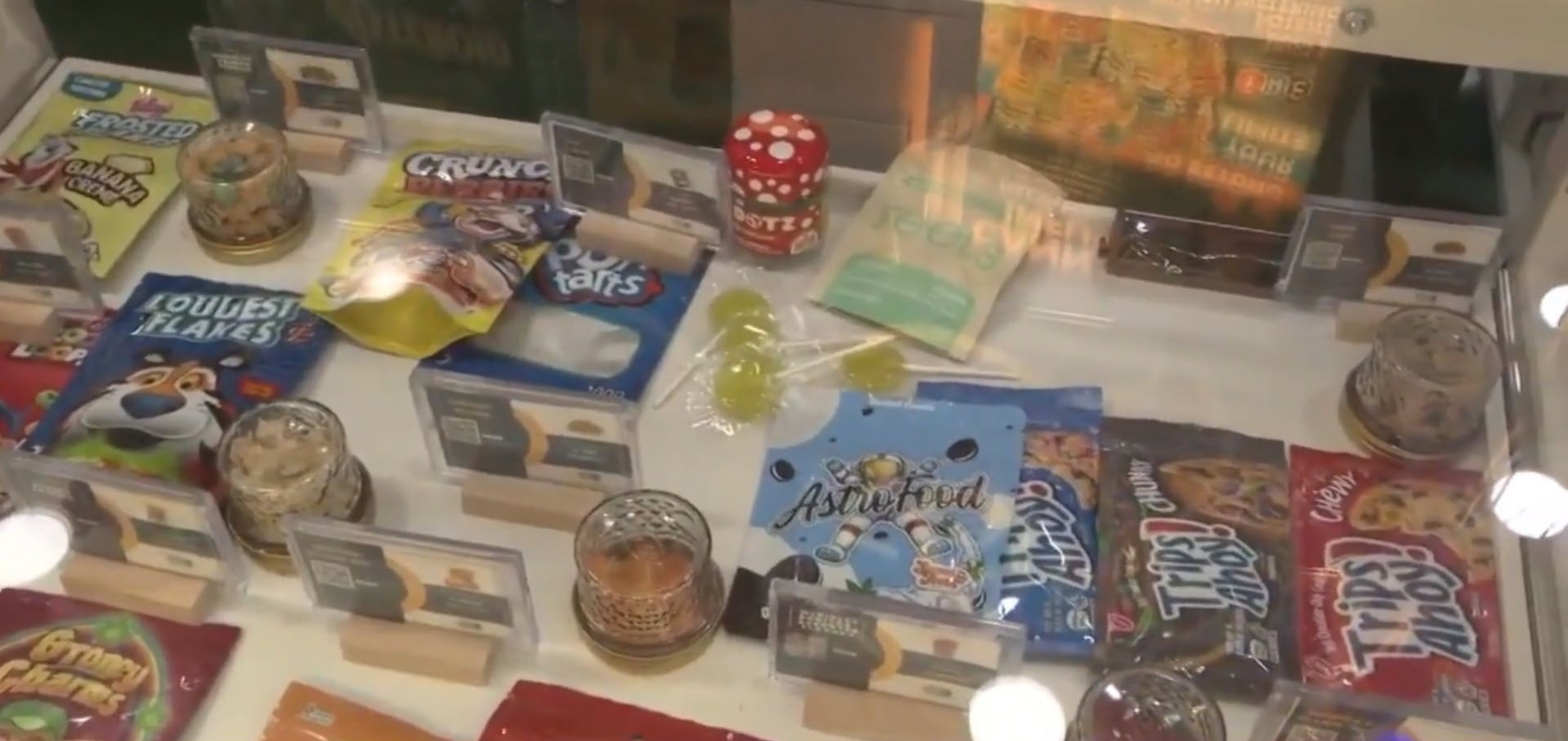
**Cake**  
3.0 RESIN  
**ELON RNTZ**  
SATIVA  
THC-M • DELTA 8 LIQUID  
DIAMONDS • THC-A • THC-P  
3.0 GRAM DISPOSABLE DEVICE  
ALL NATURAL  
NATIVE TERPENES

**JUUL**  
JUUL Device  
USB Charging Dock  
The alternative  
for adult smokers









**FOX 26**

**RASHAN DORSETT  
OWNER, THC CLUB**

**LSIAH**  
DWC **FOOD**  
UNCENSORED



# What is the age requirement for purchasing these products?



TEXAS  
Health and Human  
Services

Texas Department of State  
Health Services

Services

Health & Wellness

Diseases & Conditions

Business & Compliance

Data & Case Reporting

[Home](#) / [Consumable Hemp Program](#) / [Consumable Hemp Products - Frequently Asked Questions](#)

[Consumable Hemp Program](#)

[Consumable Hemp Products -  
Frequently Asked Questions](#)

[DSHS Consumable Hemp Product  
License Process](#)

[Consumable Hemp Program - Open  
Records](#)

## Consumable Hemp Products - Frequently Asked Questions

**Is there an age requirement to buy consumable hemp products including smokable hemp?**



No. There currently is no minimum age set by Texas statute to purchase consumable hemp products in Texas. This includes hemp products that are intended for smoking.

**What  
would**

**YOU**

**DO**





# What would you do? Case 1

**October 2023**

Smithson Valley High School  
Comal Co. Sheriff's Office

Field tests can indicate THC

NOT legal hemp vs. illegal  
marijuana

Presumptive test is probable  
cause for arrest

Prosecutors require lab  
results

Months or years to return  
results



17-year-old student

Considered an adult

Arrested for felony charge

Booked in adult county jail

Bail set at \$5,000

Possession: THC Vape Pen  
(unlabeled)

Penalty: Up to 10 years  
prison

Up to ¼ lbs. flower (4 oz.) -  
Class A Misdemeanor

Lifelong consequence

# What would you do? Case 2





# What would you do? Case 3

**January 22, 2024**



- Criminal Defense Attorney  
Specializing in DWI cases
- Cannabis Delivery Service

- Interdepartmental Raid:
  - Austin Police,
  - Travis Co. Sheriff SWAT,
  - Drug Enforcement Agency (DEA)
- Seized:
  - Bulk Marijuana (~100 lbs.), Bulk THC Edibles, Psilocybin Mushrooms, Rifles, Cell Phones, Legal Documents, US Currency
- 3 Controlled Purchases
- Warrant: Issued by Municipal Court
- 1 year after the raid, no charges have been filed

**“Confiscation without prosecution amounts to cops robbing cannabis dealers.”**



Home / ZAZA COTTON / OREOZ

ZAZA COTTON

OREOZ

**\$220.00**

SIZE

1 Ounce

CLEAR

1

Add to cart

SKU: N/A Category: ZAZA COTTON

## THIS T-SHIRT COMES WITH THE FREE GIFT OF:

OREOZ, also known as "Oreo Cookies" and "Oreos," is a potent hybrid marijuana strain made by crossing Cookies and Cream with Secret Weapon. This strain produces a long-lasting and relaxing high. Consumers should take caution as the high potency of Oreoz may be overwhelming to those new to cannabis.



**737-GAS-BUDS**

# **ATXBUDTENDERS**

**\$100 MINIMUM FOR DELIVERY. THE AMOUNT INCREASES  
THE FURTHER AWAY YOU ARE!!!!!!**

**!!!!NEW ARRIVALS!!!!**



FLOWER  
**BACIO GELATO**  
\$120.00 – \$240.00



FLOWER  
**BISCOTTI**  
\$120.00 – \$240.00



Flower4  
**BUBBA KUSH**  
\$90.00 – \$180.00



FLOWER  
**CAKE DONUT**  
\$120.00 – \$240.00

# Hazy Outcomes

- Exploitation of a Loophole in the Farm Bill
- Businesses with little, to no, regulation
- Customers charged with felonies for possession
- No oversight, no age restrictions, no safety protocols
- Lack of clarity creates legal challenges
- Inconsistent messaging and application of the laws
- Inability to accurately test products in field
  - High-cost toxicology results







# On-Premise Consumption



# Crossfading

Mixing 2 substances, most commonly:

- Alcohol
- Cannabis

“Booze before weed, gets you higher indeed”

- Alcohol increases THC absorption
- Can cause “Greenout”: chills, cold sweats, nausea, dizziness, and vomiting

“Weed before drink, you had more than you think”

- THC changes how alcohol is metabolized, delaying the effects
- Difficult to determine too much alcohol - toxicity

Amplifies Intoxication with Unpredictable Results



# Three Types of Crossfading Businesses in Texas

## **Manufacturers**

- Produce THC Seltzers
- Shipping to on- and off- premise locations across Texas
- Can be manufactured in states other than Texas

## **On-Premise Alcohol**

- Bars and Restaurants
- Selling both alcohol and THC beverages in the same location
- May have hemp-derived THC dispensary inside bar/restaurant

## **THC Infused Foods**

- Restaurants and Bars
- Culinary Institutes
- Dining experience
- THC infused food often paired with cocktails
- Multiple courses
- Buffets

---

# What Are Delta-8 Drinks?

## **What is Delta 8 and what kind is in your seltzer?**

- Delta-8 is a psychoactive cannabinoid found in the hemp plant

## **Why a beverage, specifically a seltzer?**

- Carbonated beverage allows full effects faster by-pass your liver
- D8 seltzer enters your bloodstream much faster than edibles!

## **Do D8 seltzers get you high?**

- Yes, D8 seltzers are designed to get you high

## **What do D8 shots do?**

- Euphoric, blissful effects more efficiently by using less liquid

## **Can you take Delta 8 with alcohol?**

- Alcohol increases the absorption of all forms of THC, potentially leading to a considerably enhanced high, exacerbating alcohol's judgment-impairing effects. Only combine alcohol with Delta 8 if you are being extremely cautious.









# Texas THC Seltzer Vendors

## ONE Manufacturer/Distributor

November 2, 2023

THC Seltzer Vendors

Total Vendors 121 –

Of those, 47 are Bars and Restaurants

February 22, 2024

THC Seltzer Vendors

Total Vendors 174 –

Of those, 101 are Bars and Restaurants





CANNABIS

BREWERY

DISTILLERY

CULTURE

SHOP

EVENTS

MAKING LIFE

*Wonderful*

THROUGH CANNABIS  
& CRAFT BEVERAGES

SHOP NOW



---

# 420 Cocktails



“We can make any drinks with an infusion in it.”

## **Cannabis Caviar:**

Any house cocktail with THC infused mini boba pearls

**Tea-HC:** Cannabis iced tea

**Red Eyes:** Draft shots





---

# Wild, A Cannabis Infused Dining Experience



## Wild Heights

Coffee | Cocktails | Dispensary  
Houston, TX



## Bud Bar

Montrose



## Wild Montrose

Coffee | Cocktails | Dining | Dispensary  
Houston, TX

"And per the "Wild" experience, diners will have the choice of opting for "virgin" dishes or infusing their plates with CBD or THC for a hemp-filled experience. Pre-dosed options, or dishes containing THC or CBD, will be available along with cocktail, wine, and cannabis pairings."

# Onsite Consumption – Adult Use States

**Alaska:** A licensed retail marijuana store with an approved onsite consumption endorsement *may sell food or beverages NOT containing marijuana or alcohol.*

**California:** Temporary Cannabis Event Consumption. (c) *Consumption of alcohol or tobacco shall NOT be allowed on the licensed premises.*

**Colorado:** Regulated Marijuana Businesses: General Restrictions - *Alcohol Beverage License Prohibited.*

- *Licensed Cannabis Hospitality Businesses: Alcohol Consumption Prohibited. A Licensed Hospitality Business is responsible for preventing the consumption of alcohol within its Licensed Premises.*

**Illinois:** Dispensing organizations are *prohibited from selling any product containing alcohol.*

- *Consumption Lounges - municipalities. As an example, Oakbrook Terrace §156.093 states, "There shall be NO on-site sales or consumption of alcoholic beverages or tobacco allowed on the permitted premises.*

**Maryland:** An on-site consumption establishment *may not allow the consumption of alcohol* on the licensed premise.

**Nevada:** *All alcohol, tobacco, and nicotine products are not permitted for use or sale in a cannabis consumption lounge.*

**New Jersey:** *The sale of tobacco products and alcohol will be prohibited in cannabis consumption areas.*

**New Mexico:** *Alcohol is prohibited in cannabis consumption areas.*



DRUNK

+

HIGH





Driving While Intoxicated



# Polysubstance Use & Driving

*The most common substances found in combination, identified in drivers involved in motor vehicle crashes are **alcohol and marijuana**.*

- Compared to sober drivers:
  - Alcohol-impaired - 16x increased crash risk
  - Alcohol and marijuana combined - 25x
- This combination effects:
  - The ability to divide attention between more than two tasks
  - Effectively engage in defensive driving skills
- Most prevalent among young adults and college students





# Texas Data – Cannabis Category

## 2018-2022 Drivers in Motor Vehicle Crashes Involving Drugs

### All Crash Severities (No Alcohol)

1. Unknown - 33.4%
2. Multiple Drugs - 12.4%
3. Cannabis - 7.4%

### Fatality & Serious Injury (No Alcohol)

1. Multiple Drugs - 23.6%
2. Cannabis - 21.6%

### All Crash Severities With Alcohol Involved

1. Unknown - 28%
2. Multiple Drugs - 14.2%
3. Cannabis - 14.1%

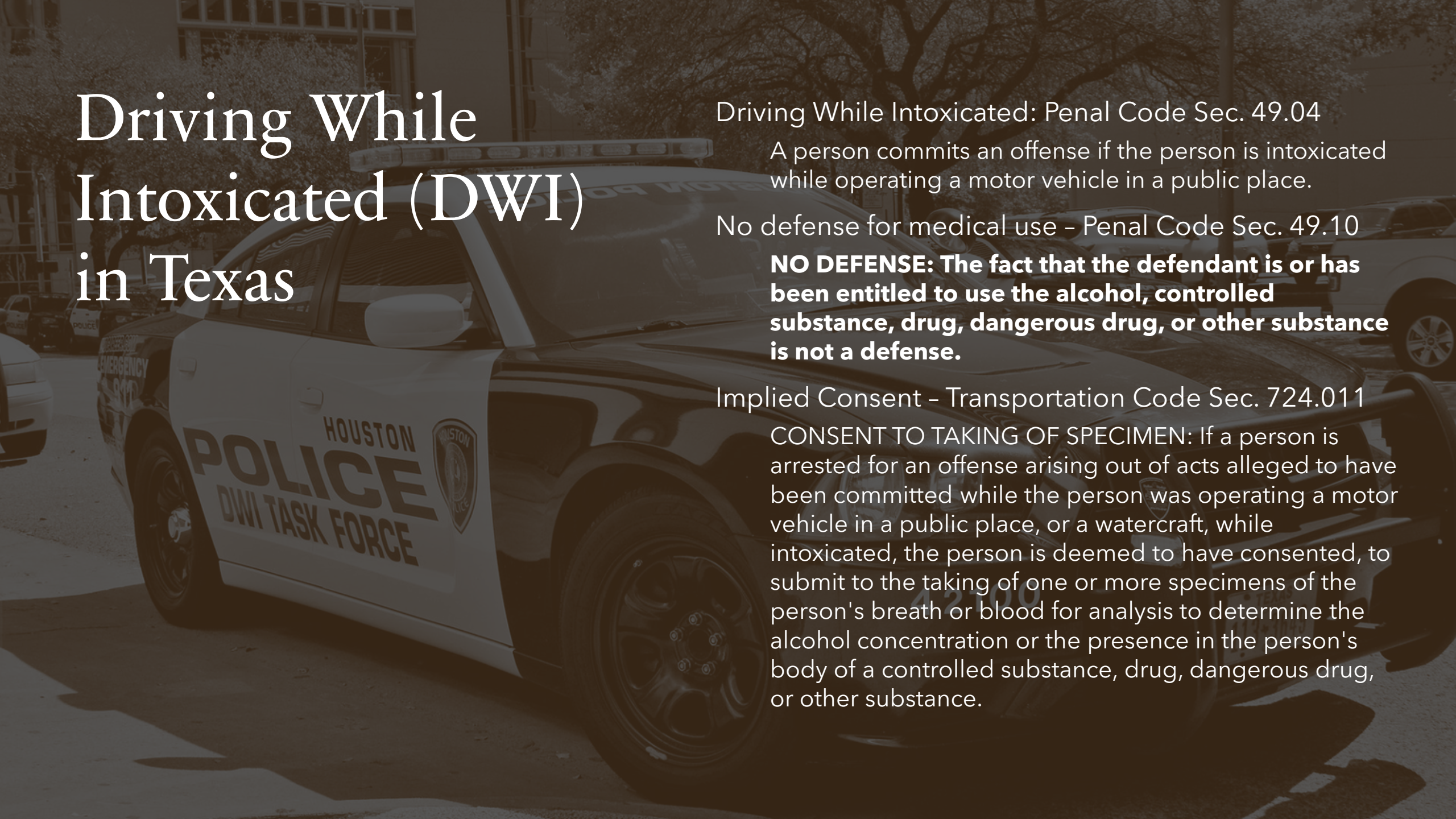
### Fatality & Serious Injury With Alcohol Involved

1. Cannabis - 28.2%
2. Multiple Drugs - 24.7%



Campaign image from:  
California Office of Traffic Safety





# Driving While Intoxicated (DWI) in Texas

Driving While Intoxicated: Penal Code Sec. 49.04

A person commits an offense if the person is intoxicated while operating a motor vehicle in a public place.

No defense for medical use - Penal Code Sec. 49.10

**NO DEFENSE: The fact that the defendant is or has been entitled to use the alcohol, controlled substance, drug, dangerous drug, or other substance is not a defense.**

Implied Consent - Transportation Code Sec. 724.011

CONSENT TO TAKING OF SPECIMEN: If a person is arrested for an offense arising out of acts alleged to have been committed while the person was operating a motor vehicle in a public place, or a watercraft, while intoxicated, the person is deemed to have consented, to submit to the taking of one or more specimens of the person's breath or blood for analysis to determine the alcohol concentration or the presence in the person's body of a controlled substance, drug, dangerous drug, or other substance.

**IF YOU FEEL DIFFERENT  
YOU DRIVE DIFFERENT**

Reducing Marijuana Impaired Driving





# Strategies: Enforcement

- **Per se laws** are ineffective
- All law enforcement officers need to become **Advanced Roadside Impaired Driving Enforcement (ARIDE)** certified
- **On-call Drug Recognition Experts (DRE)**
- **Green labs**
- Roadside **oral fluid screening**



# Strategies: Public Education

- **Campaigns** highlighting the consequences of driving under the influence of marijuana: DUI
- **Messaging** emphasizing that marijuana and other drugs impair at various levels. Calling on a designated driver is the solution
- **Partnerships** with the industry: trusted sources for consumers



Colorado Department of Transportation educating the public at a 420 Event



# Campaign Lessons

## Recommendations:

- Consumers make responsible choices
- Wait longer after use
- Emphasize slowed reaction time
- Avoid stereotypes
- Discuss credible risks and consequences

## What does not work:

- Scare tactics, fear, or overstating dangers
- Threats from government or law enforcement
- Unrealistic or derogatory scenarios that may elicit mockery





If You Feel Different, You Drive Different





# Want more info?

Ask about the TTI online course  
for marijuana education!

Cody Stewart

[c-stewart@tti.tamu.edu](mailto:c-stewart@tti.tamu.edu)

Christine Adams

[c-adams@tti.tamu.edu](mailto:c-adams@tti.tamu.edu)

